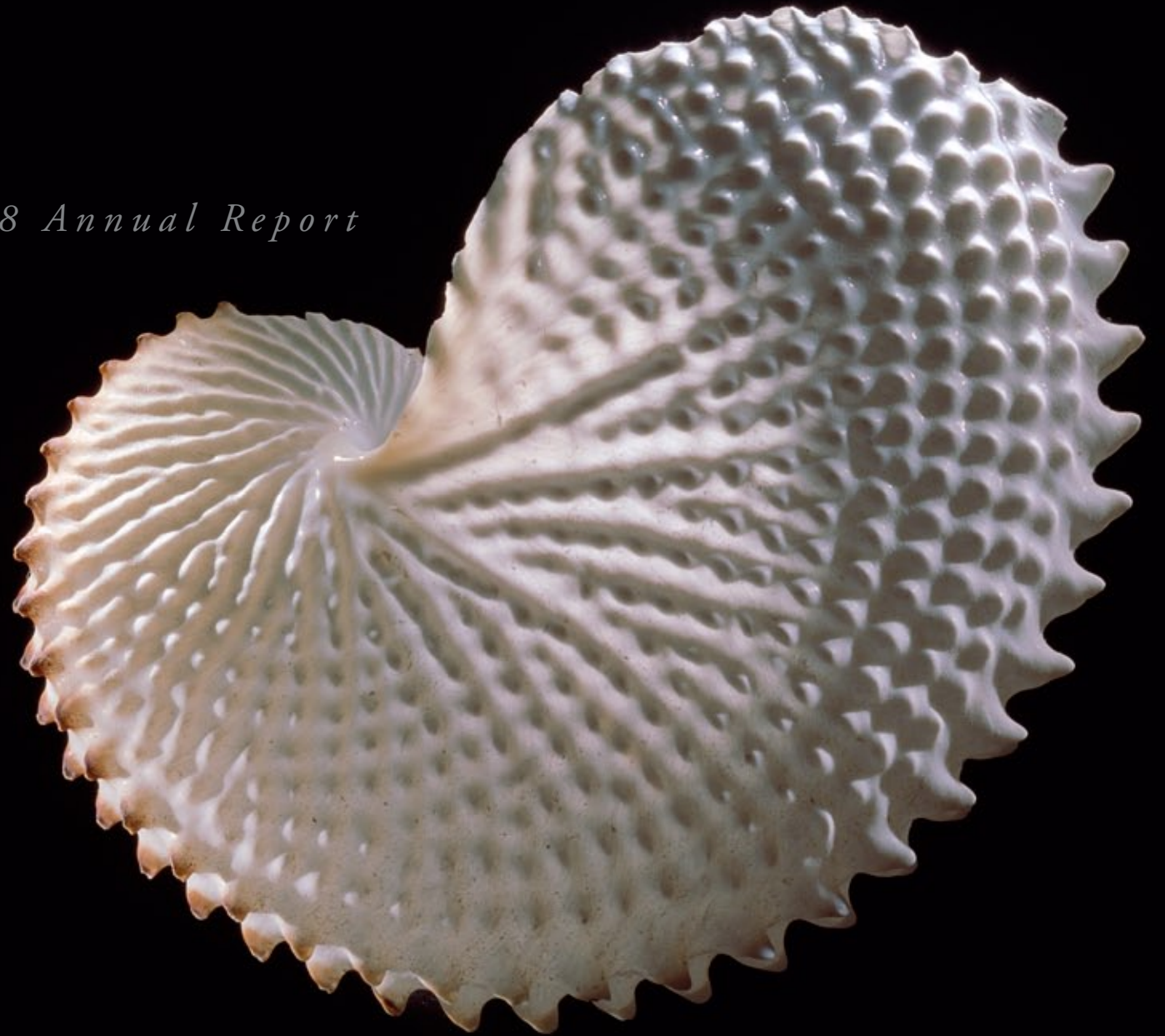


CONNECTICUT STATE MUSEUM OF NATURAL HISTORY

CONNECTICUT ARCHAEOLOGY CENTER

*2008 Annual Report*



*University of Connecticut College of Liberal Arts and Sciences*

## OUR MISSION

The Connecticut State Museum of Natural History and Connecticut Archaeology Center serve the University of Connecticut and the public by promoting an understanding and appreciation of our natural and cultural world, especially as related to New England.

### Board of Directors

William Morlock, Chairman  
Melanie Attwater-Young, CT Department of Agriculture  
David Bingham, M.D.  
Liz Buttner, CT Department of Education  
Carmen Cid, Biology, ECSU  
Jean Crespi, Geosciences and Biology, UConn  
Steve Fish, CT Department of Environmental Protection  
Carl Lindquist, M.D.  
Natalie Munro, Anthropology, UConn  
Dennison Nash, Anthropology, UConn, Emeritus  
Morty Ortega, Natural Resources, UConn  
Karin Peterson, CT Comm. on Culture & Tourism  
David Wagner, Biology, UConn  
Walter Woodward, State Historian, UConn

### Staff

Nick Bellantoni, State Archaeologist  
Susan Broneill, Museum Receptionist  
Cheri Collins, Program Coordinator & Collection Manager  
David Colberg, Public Information & Marketing Coordinator  
Collin Harty, Exhibit and Communication Design  
Leanne Kennedy Harty, Director  
Emily-Rose Lanz, Membership Coordinator  
Robert Thorson, Stone Wall Initiative

### Student Staff

Matthew Beecham  
John Chen  
Lauren LeShane  
Sarah Morton  
Amanda Sullivan

2019 Hillside Rd., Unit 1023, Storrs, CT 06269-1023 www.mnh.uconn.edu • 860-486-4460

Within the mission, the Museum's fundamental goals are to acquire and preserve collections and to use collections, exhibits, and programs:

- To cultivate an interest about natural history among the citizens of Connecticut.
- To communicate the significance and vulnerability of archaeological and natural resources.
- To enhance University learning, teaching, and research.
- To enrich elementary and secondary education.
- To acquire and present knowledge about the natural and cultural history of Connecticut and New England.
- To showcase the academic resources of the University of Connecticut and provide a public connection to them.

Photo by John Spaulding

Cover: Common Paper Nautilus  
Argonauta nodosa  
Photo by Drew Harty

FROM THE DIRECTOR



Museum Director Leanne Harty with State Archaeologist Nick Bellantoni

Dear Friends,

The reopening of our renovated building in 2007 marked the fulfillment of a major goal for the Museum and Archaeology Center. By creating dedicated programming space and developing new permanent exhibits, we have been able to better serve visitors and expand our efforts to explore the fascinating relationships between nature and culture in our region over time. Since the reopening, we have significantly increased our on-campus contribution to the University and welcomed an ever-expanding array of visitors to our facility.

In the spring of 2008, our Board and Staff began the task of developing a new five year strategic plan. Asking and answering questions about where we want and need to go as an organization, we worked together to define and articulate a clear strategy for how to get there.

As this annual report and our new strategic plan were being completed, information about our State's financial crisis began to fill the newspapers and airwaves. The full impact may not be felt for many months, but we do know this crisis will have a lasting effect on the budgets of the State, the University, the College of Liberal Arts and Sciences, and our Museum. While our vision of the Museum's future has not changed, the challenge of advancing our mission in this new economic climate will need to be accommodated.

As we work to "do more with less", we are determined to find new opportunities too. Times like these inspire new ways of approaching problems, and creative collaborations will arise from the need to maximize and share resources. In lean economic times the Museum's investment in creative collaboration, public engagement, and interdisciplinary activities will pay increased dividends. We are pleased that the recently-established Dorothy C. Goodwin Fund will help us develop a new partnership with the Neag School of Education's Teachers for a New Era program in the coming year, enhancing teacher preparation in Connecticut by utilizing Museum and Archaeology Center resources.

Our organization is not alone in this situation, and we feel fortunate to have committed donors and members like you during these times. Going forward, your support and generosity will continue to make all the difference. With leadership from Board Chairman Bill Morlock and Jeremy Teitelbaum, our new Dean in the College of Liberal Arts and Sciences, we will continue to turn challenges into opportunities and work together to achieve our organization's long term goals.

Thanks, as always.

Leanne Harty, Director

## MUSEUM TIMELINE



1880  
Charles & Augustus Storrs offer the State of Connecticut 170 acres of farmland to establish an agricultural school for boys.



1881  
Benjamin Koons, faculty members and president of the school, establishes the natural history collection.





## 2008 HIGHLIGHTS

As part of the College of Liberal Arts and Sciences at UConn, the Connecticut State Museum of Natural History shares an important academic tradition. This tradition is founded not only on passing knowledge to future generations, but also on applying this knowledge to solve problems and improve the quality of people's lives. The University of Connecticut is on the forefront of teaching and research in the sciences and humanities, and having direct access to University resources is one of the Museum's greatest assets. Museum programs and exhibits explore the dynamic relationships between nature and culture through time, sharing university research and scholarship with visitors of all ages and backgrounds. The Museum fosters the University's commitment to lifelong learning by creating opportunities for diverse audiences to acquire new knowledge, develop critical thinking skills, and gain broader perspectives on issues that effect their communities, their world, and their lives.

2007-2008 was a gratifying year for the Museum and Archaeology Center. The excitement and momentum of the Museum's facility expansion carried over into every facet of the Museum's operations and programming, increasing awareness, participation, and donor support for the Museum and Archaeology Center throughout the year. The Museum's new permanent exhibit, *Human's Nature: Looking Closer at the Relationships Between People and the Environment*, has been extremely well-received, and provides visitors of all ages with unique opportunities to explore how the natural history of southern New England has shaped the lives of the people who live here and how people, in turn, have shaped the environment. The Museum's adjoining program space became a popular special event and conference location for the entire University, expanding the Museum's on-campus role by hosting an array of receptions, alumni programs, educational activities, and professional meetings for participants from across the state.

This year, State Archaeologist Nicholas Bellantoni was elected President of the National Association of State Archaeologists, expanding our contributions beyond the state. The National Association of State Archaeologists consists of the official State Archaeologist from each U.S. state and territory. Dr. Bellantoni will lead the national association in the development of consensus views concerning the conservation of the Nation's cultural resources and will provide guidance and direction regarding laws, procedures, current research, educational programs, and ethical standards related to the archaeology field.



## EDUCATION

Through the Museum's permanent exhibit, *Human's Nature*, campus programs, community involvement, and outreach activities, the Museum served more than 90,000 people this year. Program highlights and an accounting of participation follows:

### Public Programs & Events

This year, the Museum presented 71 advertised public programs. The summer, fall, and spring seasonal brochures were sent to members and nonmembers on our mailing list. Program brochures were also made available at community events, different departments on campus, and through other organizations that have a cooperative relationship with the Museum. These programs were promoted on the Museum website, and newspaper, internet, and electronic campus announcements.

This year's programs included family activities, field workshops, ancient technologies workshops, children's workshops, drop-in children's activities, lectures, day trips, day camps, an adult archaeological field school, community events, and special events. The Museum also participated as an exhibitor at the Archaeological Institute of America/Museum of Science Family Archaeology Fair at the Museum of Science in Boston, the Mashantucket History Fair at the Mashantucket Pequot Museum and Research Center, the Mansfield Know Your Towns Fair, the "Big E" Eastern States Exposition, the Connecticut Flower and Garden Show, and the CPTV Science Expo.

The Museum's new 2nd floor programming space became a popular location for meetings and receptions during 2007-2008. Approximately 750 people attended events from the annual meeting of the Illustrator's Guild of New England in October to the Office of State Archaeology's 20th Anniversary Reception on May 3.

The Museum's programming underscores our mission statement, to explore how the natural history of southern New England shapes the lives of people and, in turn, how people have shaped natural history, by promoting a greater awareness and appreciation for the region's biodiversity and archaeological heritage. The public programming and outreach topics are carefully chosen to mesh with the goals of the mission while offering the public diverse, informative, and enjoyable experiences. Each program, from historical house tours to mineral collecting field workshops, explores the vital dynamic between natural history and human culture.



1913  
The most complete mastodon found in New England is uncovered in Farmington, CT.



1916  
The "Museum Room" is open to the public in the Old Main building on the heart of campus.



1923  
The "Apple Sales Building," future home of the Connecticut State Museum of Natural History, is built.



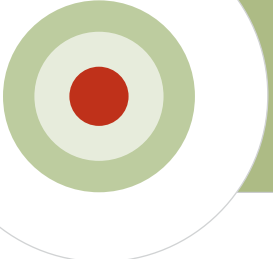
1939  
What was once the Connecticut Agricultural College becomes the University of Connecticut.



1939  
The College of Arts and Sciences is established as one of seven divisions of the newly named University.



1940  
The Wilber Cross Building opens as the University's library.



The Museum continues to offer programs with new topics and activities that have been met with enthusiastic and increasing participation by Museum patrons. In addition to presenters from the Museum's "home" departments of Anthropology and EEB, lecture and workshop presenters from other departments and organizations included the following: UConn's Physics Department, UConn's History Department, UConn's Oral History Department, UConn's Fine Arts Department, UConn's NEAG School of Education, UConn's Chemistry Department's Outreach Center, The Ballard Puppetry Institute, "Project O" at UConn Avery Point, Friends of State Archaeology, Public Archaeology Lab, Inc., Connecticut Valley Mycological Society, Holyoke Community College, The Watkinson School, Connecticut Landmarks, members of the World Atlatl Association, Bristol Gem and Mineral Club, Cedar Hill Cemetery Association, White Memorial Conservation Center, Blue Slope Farm, the National Weather Service, and independent experts Dr. Kathryn Kotula, Jim Dina and Steve Brill. UConn undergraduate and graduate student attendance at public programs continues to increase and the Museum is working to encourage that trend.

The Museum and Archaeology Center continued the successful archaeology summer day camps in 2007, with three different sessions at an authentic archaeological site on the UConn campus. The site, selected in cooperation with the College of Agriculture and Natural Resources and the State Historic Preservation Office in 2004, is an ongoing archaeological investigation under the supervision of UConn archaeologists. All artifacts recovered in the excavation, as well as the field notes written by each child, become a part of the State of Connecticut's Archaeological collections, and contribute to our understanding of Connecticut's past. A selection of the artifacts recovered by the students has been exhibited in the Museum of Natural History, and subsequent excavations will update that portable display.

The summer of 2007 was the debut for the Museum and Archaeology Center's week long Field School for Adults, led by the State Archaeologist. Fourteen participants spent the week in the classroom, the lab, and at an archaeological dig during this intensive class. Participants came from varied backgrounds, from interested students to members of historical societies to police officers. The participants were unanimously enthusiastic about this field school.

Strong participation from University students was evident at the Atlatl Day and Knap-in on campus on September 29. Over 130 people attended this event, sponsored by the Farm Services Department, Friends of State Archaeology, and the World Atlatl Association in collaboration with the Museum.

This year, the Museum and Office of State Archaeology hosted the combined spring meetings of the Archaeological Society of Connecticut and the Massachusetts Archaeological Society. These meetings were open to the public, and included eight talks by archaeologists from the southern New England area.

In addition to these highlights, the Museum offered thirteen field-learning workshops, fifteen family activity programs, one ancient technologies workshop, eight children's drop-in activities, one "kids only" workshop, two day trips, nine Museum lectures, and co-sponsored six Teale lectures and one Friends of the Office of State Archaeology Annual Meeting lecture.



Photo courtesy of the World Atlatl Association

Atlatl Weight  
From the Charles  
Caswell Collection

### PUBLIC PROGRAMMING

Workshops, Camps & Trips .....	621
Lectures .....	1,363
Meetings & Events .....	749
Total .....	2,733

### OUTREACH ACTIVITIES

Small Group .....	533
Community Events .....	86,215
Total .....	86,748

### EXHIBITS

Exhibits .....	2,433
Collections on Public View .....	3,200*
Total .....	5,633

Total Attendance..... 95,114

\* Does not include Mashantucket Pequot Museum attendance.

2008 ATTENDANCE

### School Group Visits and Outreach

The Museum provides a variety of outreach programs designed to meet the needs of organizations throughout the State of Connecticut. These programs are not always publicized, but are special outreach activities that range from small group presentations in local schools to larger organized events. The establishment of the Connecticut Archaeology Center within the Museum has resulted in increased interest in specialized programs, leading to the development of new activities that align with school curricula in many relevant areas.

The Museum's permanent exhibit was a destination of interest for visitors from camp and enrichment groups statewide. In July, groups of visitors from the Sweeney School, University of Hartford's Summer Place, CREC, Breakthrough New Haven, and the Community School for the Arts came to tour the exhibit. In August, groups from the Mystic Nature Center, UConn's Alumni Center, and Girls Inc. of Hartford all toured the exhibit.

In November, all of the students in UConn's Anthropology 102 classes came to tour the exhibit as a part of their coursework. Hall High School came to the Museum as a part of an ongoing program with the State Archaeologist; they toured the exhibit, and attended a presentation by the State Archaeologist. In December, 50 students made unscheduled visits to the Museum.

Students from New Britain High School and fourth grade students from Smalley Academy in New Britain visited the Museum in March. In April, students from Newington High School visited the Museum for a presentation by the State Archaeologist and a tour of the exhibit. In May, 100 fourth grade students from EASTCONN visited the Museum for a planned archaeology activity and a tour of the exhibit, and 100 high school students from New Britain High School toured the exhibit.

On June 30, the Museum presented an archaeology unit as a part of the 4-H Teen Connection Conference at UConn.

The Museum participated in the Enrichment Cluster program at the Southeast School in Mansfield in May and June. Students took part in a hands-on workshop where they examined bones and skeletons, utilizing specimens from the Museum's natural history teaching collection.



1940s  
Plans for a new Alumni-Student Union include a wing for a Natural History Museum, which never comes to full fruition.



1963  
The Norris Bull collection of over 10,000 Connecticut Native American artifacts is donated to the University of Connecticut.



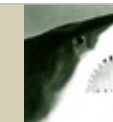
1982  
Dr. Carl Rettenmeyer makes a case to the University's Board of Trustees to establish a new museum of natural history.



1982  
Dr. Rettenmeyer is appointed the first Director of the Connecticut State Museum of Natural History.



1983  
The museum establishes a General Endowment.



1983  
A 15-foot great white shark, hooked off of the end of Long Island, is donated to the museum.

## COLLECTIONS & LOANS

Through formal loans, artifacts and biological collection materials are more frequently being utilized by other institutions, creating a Museum presence in numerous locations across the state. On permanent loan to the Mashantucket Pequot Museum are 70 objects from the Anthropological Collections at UConn which are featured in exhibits throughout the facility with appropriate acknowledgements. The artifacts were selected for exhibit prior to the opening of the Museum and Research Center in 1998, and many thousands of visitors have had their learning experience enhanced as a result of this loan.

Within the university, specimens from the Museum and Archaeology Center are on exhibit in other locations, such as the Biological Sciences and Physics Building, Torrey Life Sciences Building, the College of Liberal Arts and Sciences lobby, and in changing exhibits at the Babbidge Library and Dodd Research Center.

The Museum of Natural History's materials are also being exhibited at other organizations in Connecticut. Trowbridge Nature Center rents mounted bird and mammal specimens and photographic displays for their changing seasonal exhibits three times each year.

It has been an exciting year for the Collections Department. On June 6, Charles Platt donated the 892-plus Charles Caswell Collection of Native American archaeological artifacts. These stone and ceramic artifacts are of historical as well as archaeological interest, as some of Caswell's finds were included in the Norris Bull Collection.

Also in June, retiring teacher Louise Taylor donated a large collection of ethnographic teaching materials from Latin America and Spain. She had used these items during her teaching career in the public schools, and the Museum will continue to use them to educate children.

Dr. Douglas Jordan was Connecticut's first State Archaeologist and an Emeritus Professor at UConn. After his death, his daughter, Mandy Jordan, donated his extensive library of anthropological and archaeological books and journals, as well as a collection of reproductions of pre-industrial technologies for teaching purposes.

In November, Jon Bayer and family presented a collection of 3,000 southeastern Connecticut artifacts collected by his father, Louis Bayer, to the Office of State Archaeology and Connecticut Archaeology Center. On hand was Kathy Hoy, who had worked with Louis Bayer to organize and document this collection during her time as a UConn Anthropology Department graduate student.

In April, Donna Wojdak of Connecticut DEP initiated discussion about semi-permanent loans of natural history specimens for exhibit at the newly opened Peoples State Forest Nature Center at Peoples State Forest in Barkhamsted. She came to the Museum's collections facility on April 15, and selected a variety of items for their museum. We are working with the Nature Center to offer expanded public programming in the western part of the state.

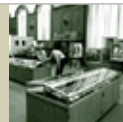


*Projectile Points  
From the Norris Bull Collection  
Photo by Drew Harty*

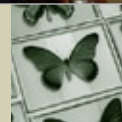


*Photo by Suzanne Zink*

**1985**  
*The Connecticut State Museum of Natural History is officially established by the Connecticut State Legislature.*



**1985**  
*The Museum opens its doors to the public in the Wilbur Cross Building.*



**1985**  
*The A.J. Carpenter Collection of Butterflies is accepted by the Museum.*



**1987**  
*The Office of State Archaeology is established by the Connecticut State Legislature, as a part of the Museum of Natural History.*



**1988**  
*The Museum accepts the Rex Brasher collection of bird paintings.*



**1992**  
*The Barnum/Secor anthropology collection of over 18,000 artifacts is transferred to the Museum.*

# RESEARCH & PRESERVATION



Ceramic Vessel  
From the Norris Bull Collection



## Office of State Archaeology

State legislation has established numerous areas of responsibility for the Connecticut Office of State Archaeology (OSA), and as economic development projects increase in the state, the volume of work associated with each of the following duties has increased:

- Oversight of in situ preservation, archaeological excavation, or reburial of Native American human remains uncovered by any ground disturbance
- Curatorial oversight of over 600,000 artifacts repositied at the Connecticut State Museum of Natural History
- Oversight of an inventory of Native American cemeteries, and preservation of other human remains and cemeteries
- Acting on recommendations made by the Native American Heritage Advisory Council
- Providing recommendations on proposed State Archaeological Preserves, and serving on the River Protection Advisory Committee
- Archaeological salvage of properties threatened with destruction
- Public and private research of “the highest possible standards in archaeological investigations”
- Publication and dissemination of information about the ethnohistory of the region, and answering inquiries about the state’s archaeological resources
- Maintaining comprehensive site files and maps (more than 5,000 records)
- Membership on the Historic Preservation Council, which advises the Connecticut Commission on Culture and Tourism

In fulfilling these duties, State Archaeologist Nicholas Bellantoni is involved in numerous field excavations and related research each year. Notable among these was the project to locate the graves of 46 British prisoners of war who died of smallpox in Milford. Research into New England vampire folklore continues to expand, and Bellantoni’s work documenting the exhumation and reinterment

of Henry Opukaka’ia was featured in the Fall 2007 Special Issue volume of *Connecticut History*, published by the Association for the Study of Connecticut History.

Charged with reviewing all proposals for construction and modification of land where archaeological sites may be located in Connecticut, the State Archaeologist conducted over 100 field reviews and site meetings in communities through May of this year. In addition, the OSA evaluated 256 project proposals for state municipalities during that period using site files and other reference materials. Over 20,000 miles were logged in OSA travel this year.

The Friends of the Office of State Archaeology, Inc. (FOSA) is the volunteer organization that assists the State Archaeologist in fieldwork and routine laboratory activities. The organization has approximately 100 dues-paying members who contributed over 3,000 hours of their time in support activities. This year Nick Bellantoni and Leanne Harty worked closely with the FOSA Board of Directors to establish long term goals and objectives for the organization within the new Archaeology Center. Together with Bellantoni, they worked to evaluate funding opportunities with an eye toward securing additional staff to help provide services and improve the efficiency of the OSA.

The Office of State Archaeology provides a wide variety of public education services. This year Bellantoni made over 50 public and academic presentations as well as professional training programs. Requests to the OSA for public presentations and professional training continue to increase, and the Museum has formalized a new system to route such requests. Using a Speaker’s Bureau format, many requests are now prioritized and scheduled through the Museum’s administrative offices, freeing the state archaeologist of time-consuming scheduling duties and helping to ensure that high priority requests are fulfilled.



1996  
Dr. Carl Rettenmeyer retires as the Director of the Museum. Jan Taigen is appointed Interim Director.



1997  
Volunteers establish the Friends of the Office of State Archaeology (FOSA) to support the Connecticut Office of State Archaeology.



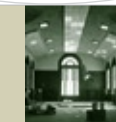
1998  
The Museum moves under the College of Liberal Arts and Sciences.



1998  
Dr. Ellen Censky is hired as Director of the Museum.



1999  
The Museum conducts Connecticut’s first State Bioblitz in Keney Park, Hartford.



1999  
Due to UConn 2000 renovations the museum closes its public exhibit space in the Wilber Cross Building.

# PUBLIC INFORMATION, MARKETING & MEMBERSHIP



Photo by John Spaulding



Barred Owl, *Strix varia*  
From the Eugene Allen Collection

The grand reopening of the Museum and Archaeology Center in the spring of 2007 created significant momentum in realizing a number of the Museum's primary membership and marketing goals for the year. This included increasing the awareness of the enhanced Connecticut State Museum of Natural History and Archaeology Center, and highlighting *Human's Nature*, the new permanent exhibit. Furthermore, the added attention brought by the reopening amplified public attention to the Museum and Archaeology Center's ongoing educational offerings and archaeological endeavors.

## Public Information & Marketing

Through the use of the museum's ever-expanding marketing and outreach databases, the museum was featured in a multitude of media platforms, from traditional and online local publications to national media outlets. Highlights include the following:

The 2007 Connecticut State BioBlitz continued to make news well into the 2007-2008 academic year, and was cited in an article in the National Science Teachers Association's national publication *NSTA Reports*.

Archaeology School for Adults, a new weeklong program offered by the Museum and Archaeology Center, received quite a bit of media attention from outlets such as the *UConn Advance*, *Daily Campus*, *The Reminder*, the *Hartford Courant*, and the *Norwich Bulletin*. The program offered participants the exclusive opportunity to spend an entire week learning from and working with State Archaeologist Nicholas Bellantoni.

A \$1-million private gift to the Museum by Mrs. Julia B. Budney and the donation of the Henry S. Budney Natural History Collection, comprising more than 115 high quality vertebrate mounts and assorted ethnographic items, continued to receive noteworthy local, national, and international media attention. The gift, to promote the museum's educational programs and to be used for the design and construction of the next phase of the museum's renovations, was covered by media outlets such as *The UConn Advance*, Fox 61 WTIC, the *Hartford Courant*, CW20 WTXN, *United Press International*, *The Stamford Advocate*, *dailyindia.com*, the *Malaysia Sun*, the *Earth Times Online Newspaper*, *The Boston Herald*, WCBS Radio, and *newsday.com*.

Another important donation to the museum, the Louis M. Bayer Artifact Collection, was reported on by numerous news outlets such as NBC 30, *The Willimantic Chronicle*, *The New London Day*, and *Hartford Courant*. The collection of

more than 3,000 indigenous Connecticut artifacts, collected by Mr. Bayer from 1937 to 1970, has become part of the University of Connecticut's substantial anthropological collections and will be used as a resource for historical and archaeological research projects, graduate student theses and dissertation research, and public educational exhibits.

It is relatively common for most of the individual educational programs offered by the Museum to receive some media coverage, from a short description of the program in various print and online outlets' upcoming events sections to a feature length story focused on the activities of the presenter and program participants. Some examples of Museum programs that were featured in the media included a talk and book signing by Dr. Ron Mallett, UConn Physics Professor and author of *Time Traveler*. Dr. Mallett's book, *Time Traveler*, is an autobiographical account of his lifelong quest to design and build a machine for time-travel. Also receiving a media attention were two programs lead by Dr. John Bell, "Shadow Puppets around the World" and "Shalako Puppets." Dr. Bell is the Director of Ballard Institute and Museum of Puppetry at UConn and an internationally renowned puppeteer, professor, and historian of Puppet Theater.

It is difficult to document completely when the Connecticut State Archaeologist, Nicholas Bellantoni, is in the news. The work of the State Archaeologist is consistently reported on by the media. A number of prominent stories featuring the State Archaeologist this year included his ongoing work with the Venture Smith project and his work with a number of state and local law enforcement investigations. Dr. Bellantoni was also featured in a WTNH 8 special presentation "Lost: A plane crash from the past," the story of two Hellcats that collided above the Thames River and crashed in eastern Connecticut on October 19, 1944, killing both pilots. Most recently, New Haven and Fairfield County media outlets have covered Dr. Bellantoni's work with Southern Connecticut State University Professor Valerie Andrichko and her students on a project to identify old skeletal remains found in Fairfield's Sturges Park.

## Membership

The Museum's members continue to be a strong asset to the organization, both in generating revenue and building community relations. Many members have been supporting the Museum for decades. They can testify how far the organization has come and are genuinely excited with the prospects for the Museum's future. Members regularly participate in lectures, programs, and workshops both on campus and across the state. Many Museum members are also involved in several community organizations or historical societies, strengthening the ties between the Museum and the communities it serves.

The Membership Office executed a small membership drive in July 2007, targeting former members who had not renewed their membership since 2003. The purpose behind this membership drive was twofold—to bring lapsed members back into active membership and also to identify people who could be removed from the membership mailing list, thereby cutting printing and postage costs.

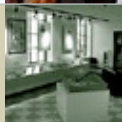
Moving ahead, the Membership Office looks forward to offering more members-only events and programming. In May 2008, the Museum's Owl-Level Members and Donors were among supporters invited to the celebration honoring 20 years of the Office of State Archaeology. Over 100 people were in attendance, many of them long-time Museum members. Events like this, especially when held in the Museum's exhibit and classroom space, bring people to the building that may not participate in workshops or programs and gives them exposure to the exhibit, *Human's Nature*, which is a key element in the Museum's mission of educating the public about the interaction between the natural world and human culture. By offering more events of this type and other members-only programs, the Membership Office hopes to enhance the membership experience by fostering the sense of community among the Museum's members and giving more value to becoming a member.



1999  
The Museum is approved to relocate to its new home in the old "Apple Sales Building" on Hillside Road.



2000  
The Museum offers the long-term loan of Native American artifacts for use in the Pequot Museum's new permanent exhibits.



2000  
Phase I of the Museum's new building renovations are completed, creating administrative offices and a small exhibit area.



2003  
Dr. Ellen Censky steps down as Director of the Museum



2004  
Lou Lent celebrates her 20th year as a Museum volunteer.



2004  
Interim Director, Leanne Hartly, is appointed Director of the Museum.

# FINANCIAL SUMMARY\* FOR THE YEAR ENDING JUNE 30, 2008

REVENUE	Operating Funds	Endowment Principle	Donation Funds	All Funds FY 2008
Operating Donations.....	\$23,798		\$235,436	\$259,234
Membership .....	\$19,513			\$19,513
Rental Income.....	\$3,796			\$3,796
Endowment Return.....	\$56,561	\$137,690		\$194,251
Endowment State Match.....		\$935		\$935
Programs, Fees, etc. ....	\$18,061			\$18,061
OSA Support.....	\$15,000			\$15,000
Student Support.....	\$7,500			\$7,500
Salary Allotment.....	\$412,700			\$412,700
<b>Total Income .....</b>	<b>\$556,929</b>	<b>\$138,625</b>	<b>\$235,436</b>	<b>\$930,990</b>

## EXPENSES\*\*

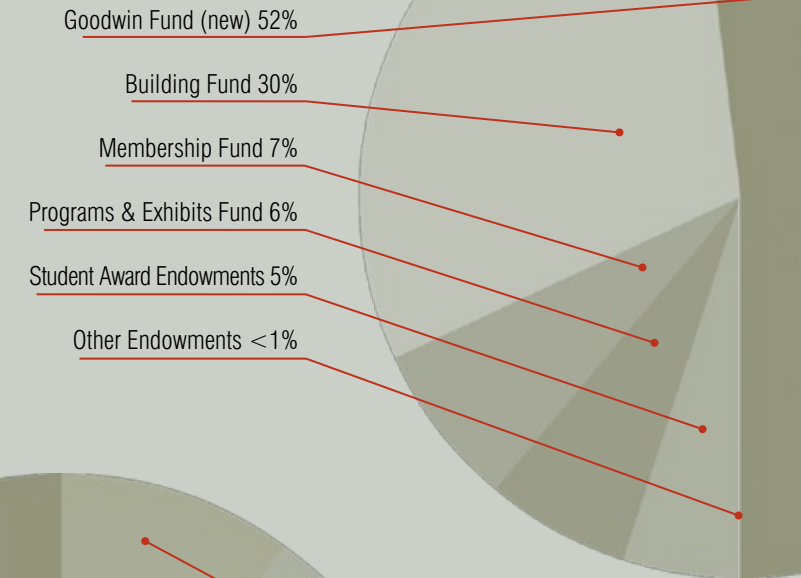
Salaries and Benefits.....	\$490,686
Program Support.....	\$8,759
Office Supplies .....	\$2,292
Office Equipment .....	\$3,170
Phone .....	\$4,461
Postage.....	\$6,625
Printing.....	\$12,960
Graphic Communication.....	\$1,269
Collections .....	\$1,100
OSA Vehicle Expenses.....	\$6,091
Professional Development.....	\$2,282
Student Awards .....	\$2,600
Miscellaneous .....	\$2,835
<b>Total Expenses .....</b>	<b>\$545,130</b>



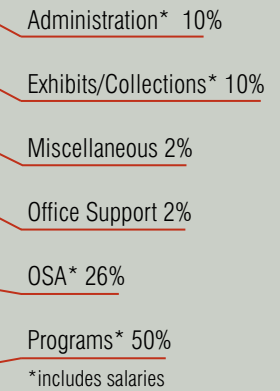
\*CSMNH's finances are audited with the UConn Foundation and the University of Connecticut.

\*\*Does not include building renovations and special projects.

## FY 2008 DONATIONS & MEMBERSHIP



## FY 2008 OPERATING EXPENSES



**2004**  
The Connecticut Archaeology Center is established as a part of the Museum of Natural History.

**2004**  
The Stone Wall Initiative becomes part of the Connecticut State Museum of Natural History.

**2006**  
The Museum's total endowments surpass \$1M

**2007**  
The Henry C. Budney Vertebrate Collection is transferred to the Museum. The Julia B. Budney Fund is established.

**2007**  
Phase II renovations are completed. The Museum opens its permanent exhibit, "Human's Nature," and two new classrooms.

**2008**  
Phase III expansion initiated, with plans for new collections facilities, archaeology lab and professional research library.

## VOLUNTEERS

### Contributing Science & Anthropology Experts

Arthur Basto Archaeological Society

Akeia Benard\*  
 Jeff Bendremer\*  
 Connie Borodenko  
 Dan Cruson  
 Jim Dina  
 Bob Dubos\*  
 Friends of the Office of State Archaeology  
 Bruce Greene  
 Alison Guinness  
 Sue Hochgraf\*  
 Tim Ives\*  
 Virge Kaske\*  
 Michael Kennerty\*  
 Clinton Morse\*  
 Natalie Munro\*  
 Gary Nolf  
 Jen O'Brien\*  
 Jane O'Donnell\*  
 PAST Inc.  
 Cynthia Peterson\*  
 Karin Peterson  
 Dave Poirier  
 David Robinson\*  
 Douglas Scott  
 Ruth Shapleigh-Brown  
 Laura Katz Smith\*  
 Suzy Staubach\*  
 Melissa Tantaquidgeon-Zobel  
 Robert Thorson\*  
 David Wagner\*  
 Walter Woodward\*

### Docents & Program Volunteers

Bonnie Beatrice  
 Ken Beatrice  
 Diane Beers  
 John Bell\*  
 Mary Brescia  
 Carolyne Burgess  
 Al Ciccarelli\*  
 Connecticut Landmarks Staff  
 Dave Cooke  
 June Cooke  
 Nat Cooper  
 Ashley Doria\*  
 Jeffrey Egan\*  
 Joy Erickson\*

Glenn Field  
 Dolle Fisher  
 Elmer Fisher  
 Ed Force  
 Pam Franko\*  
 Phil Graham\*  
 June Guillow  
 Ken Guillow  
 Sue Harrington  
 Sue Hochgraf\*  
 Bettejane Karnes  
 John Kelly\*  
 Millie Kramer  
 Ruth Ladd  
 Emily Lanza  
 Lou Lent\*  
 Lisbon Historical Society  
 Ron Mallett\*  
 Lois Maloney  
 Connie Marsh  
 Irene McHugh  
 Betty Miller  
 Dennison Nash\*  
 Suegene Noh\*  
 Gary Nolf  
 Matt Opel\*  
 Mary Palmer  
 Polly Palmquist  
 James Paquin  
 Frank Pearson  
 Maxi Polihronakis\*  
 Janet Pritchard\*  
 Cynthia Redman  
 Rita Rehm  
 Carl Rettenmeyer\*  
 Marian Rettenmeyer  
 Cynthia Riccio  
 Dave Rosgen  
 Lena Samsonenko\*  
 Betty Savage  
 Paul Scannell  
 Kurt Schwenk\*  
 Walter Sekula  
 Chuck Smith\*  
 Bruce and Sondra Stave\*  
 Virginia Stallman  
 Roxanne Steinman

*Toy Inuit Kayak  
 From the Norman Chance Collection*

Amanda Sullivan\*  
 Peggy Taylor  
 Betty Wardwell

### Office of State Archaeology

John Barclay\*  
 Stephn Bartkus  
 Peter Bass  
 Bonnie Beatrice  
 Kenneth Beatrice  
 David Cooke  
 June Cooke  
 Anne Chaquette  
 Dr. Henri Coppes  
 Mark Falade  
 Mark Gobell  
 Bruce Greene  
 Jim Hall  
 Alex Hasychak  
 Dreda Hendsay  
 Mae Johnson  
 Bill Keegan\*  
 Kris Keegan  
 George Kinsella  
 Barbara Kipfer  
 Deborah LaBrie  
 Richard LaRose  
 Robert Martincheck  
 Gary Nolf  
 Jeff Pudlinski  
 Mike Raber  
 Jack Rajotte  
 Patricia Reardon  
 Cynthia Redman  
 Paul Scannell  
 Bill Schultz  
 Ruth Shapleigh-Brown  
 John Spaulding  
 Roger Thompson  
 Jim Trocchi  
 Lee West

\*UConn faculty, staff,  
 students, or alumni

## DONORS & MEMBERS

### \$80,000 - \$90,000

Mr. and Mrs. William M. Morlock

### \$9,000 - \$10,000

Dr. Christopher S. Elphick and  
 Dr. Margaret A. Rubega

### \$1,001 - \$3,000

Eaton Charitable Fund  
 Dr. Kent E. Holsinger  
 Dr. John L. C. Lof

### \$501 - \$1,000

Aetna Foundation, Inc.  
 Robert J. Behnke, PhD  
 Dr. Linda and Mr. Richard Bireley  
 Mr. and Mrs. James D. Harvey  
 Dr. Dennison J. Nash  
 Pfizer, Inc.  
 Dr. and Mrs. Carl W. Rettenmeyer

### \$201 - \$500

Anonymous Donors  
 Mr. John E. Rogers and Ms. Mary R. Beckert  
 Capitol Salvage  
 Mr. and Mrs. Michael J. Cardin  
 Ms. Celeste Champion  
 Dr. George A. Clark, Jr.  
 Dr. and Mrs. Michael D. Curtis  
 Mr. and Mrs. Kenneth R. Feathers  
 Mr. Thomas J. Harris  
 Dr. and Mrs. Scott K. Lehmann  
 Dr. and Mrs. Carl W. Lindquist  
 Northeast Utilities Foundation, Inc.  
 Mr. and Mrs. James R. Russel  
 Mr. Keith E. Wilson and Ms. Marjorie A. Hayes

### \$75 - \$200

AT & T Foundation  
 Mr. Peter J. Auster and Ms. Lisa C. Wahle  
 Mr. and Mrs. Alphonse Avitabile  
 Bank of America Foundation, Inc.  
 Ms. Janet M. Beatty  
 Mr. Gary W. Bigelow  
 Mr. and Mrs. Harry H. Birkenruth  
 Ms. Ritamarie C. Braswell  
 Mr. and Mrs. Carl H. Brolin  
 Dr. and Mrs. William R. Bronson  
 Mr. and Mrs. Bruce Burchsted

Ms. Tracy M. Cella  
 Mr. and Mrs. Kenneth S. Clark  
 Mr. and Mrs. Douglas J. Cooper  
 Mr. and Mrs. Denis Cunningham  
 Ms. Faith Damon Davidson  
 Mr. William R. Cathcart and  
 Ms. Mary R. Deveau  
 Mrs. Betty A. Feingold  
 Mr. and Mrs. Steven O. Fish  
 Dr. Lauri K. Freidenburg  
 Mr. and Mrs. Harry S. Gaucher, Jr.  
 Mr. Stephen R. Gephard  
 Mr. Brian E. Gill  
 Ms. Nusie M. Halpine  
 Hampshire Bird Club, Inc.  
 Dr. and Mrs. Heinz Herrmann  
 Mr. and Mrs. Hamilton Holt  
 Dr. and Mrs. G. Michael Howard  
 Mr. Alfred J. Hunyadi  
 Mr. and Mrs. David L. Kapp  
 Mr. and Mrs. Ricky Kauffman  
 Drs. Jane and James Knox  
 Mr. Francis E. Korn  
 Mrs. Louise M. Lent  
 Mr. and Mrs. William T. Lonergan, Jr.  
 Dr. Louis Mameli  
 Dr. David Markowitz  
 Mr. and Mrs. Robert J. Martinchek  
 Mr. and Mrs. Thomas M. O'Dell  
 Mr. Wilfred M. Paquette  
 Mr. and Mrs. Alan M. Perrie  
 Ms. Martha G. Perry  
 Dr. and Mrs. William J. Pohley  
 Mrs. Barbara I. Potterton  
 Mrs. Rita Rehm  
 Mr. and Mrs. Donald B. Richardson  
 Ms. Kathleen M. Riley  
 Mr. Michael F. Robinson  
 Mr. Steven H. Rogers and  
 Ms. Barbara J. Depray  
 Dr. and Mrs. Antonio H. Romano  
 Mr. and Mrs. Mark J. Roy  
 Carl W. Schaefer, PhD  
 Mr. and Mrs. Roger S. Schofield  
 Kenneth P. Sebens, PhD  
 Mr. and Mrs. Thomas C. Smith  
 Subway Sandwiches & Salads  
 Mrs. Margaret B. Taylor  
 Mr. and Mrs. Michael J. Taylor

Dr. and Mrs. Francis R. Trainor  
 United Technologies Corporation  
 Meredith L. Vasta, PhD  
 Mr. and Mrs. Rudy F. Voit  
 Drs. Marta and Kentwood Wells  
 Mr. and Mrs. John S. Wheeler  
 Mr. and Mrs. Russell H. Wheeler, Jr.  
 Mrs. Shirley Whitworth Bertram  
 William H. Hall High School  
 Mr. and Mrs. Raymond J. Winter  
 Ms. Ruth L. Woodford  
 Mr. and Mrs. John E. Wraight, Jr.

### Up to \$75

Mr. and Mrs. Karl F. Acimovic  
 Mr. and Mrs. Neal M. Alderman  
 Mr. and Mrs. Paul B. Allaben  
 Ms. Ann I. Allen  
 Amica Companies Foundation  
 Mr. and Mrs. Peter S. Andersen  
 Anonymous  
 Mr. and Mrs. Harry R. Archambault  
 Mr. and Mrs. Lawrence G. Ash-Morgan  
 Mr. and Mrs. Robert D. Atkinson  
 Mrs. Isabelle K. Atwood  
 Dr. Elizabeth and Mr. Gerhard Austin  
 Mr. and Mrs. James E. Bachman  
 Mrs. Linda Bailey  
 Ms. Sandra Bailey  
 Mr. and Mrs. Malcolm F. Barlow  
 Mrs. Mary W. Beardsley  
 Dr. David A. Corsini and  
 Ms. Delia S. Berlin  
 Mrs. Nancy S. Bernard  
 Dr. Susan T. Berry  
 Mr. and Mrs. Paul W. Betts  
 Ms. Monica M. Bock  
 Ms. Aline L. Booth  
 Mrs. Marcella J. Booth  
 Mr. Richard Q. Bourn, Jr.  
 Dr. and Mrs. John P. H. Brand  
 Ms. Maryanne Brustolon and  
 Mr. Larry Oswald  
 Mr. and Mrs. Thomas J. Burns  
 Mr. and Mrs. Paul W. Buttress  
 Mr. and Mrs. John J. Cagianello  
 Ms. Debra D. Campbell  
 Dr. Fred A. Cazel, Jr.  
 Dr. Dorothy and Mr. Peter Cheo

DONORS & MEMBERS CONTINUED

Mr. and Mrs. Albert C. Ching  
 Mrs. Dorothy B. Church  
 Ms. Joan E. Clapp  
 Dr. J. Garry Clifford and Ms. Carol K. Davidge  
 Mr. and Mrs. Harlan J. Coit  
 Mrs. Helen J. Collins  
 Mrs. Harriet L. Comboni  
 Ms. Barbara F. Cook  
 Dr. and Mrs. Henri R. Coppes  
 Ms. Sally F. Cornish  
 Ms. Margaret Costantino  
 Mr. and Mrs. Daniel C. Coughlin  
 Mr. and Mrs. Charles C. Crowdis  
 Mr. Mark E. Dalton and  
 Ms. Debra K. De Vries-Dalton  
 Dr. and Mrs. Willard H. Daniels  
 Mr. Herb P. Davidson  
 Mr. and Mrs. Peter E. DeCarli  
 Ms. Doris B. Demarest  
 Dr. Joseph Heissan and Ms. Clara R. Denison  
 Mr. Clifford E. Desch, Jr.  
 Mr. Joseph Dimenno  
 Dr. and Mrs. Arthur W. Dimock  
 Drs. Samuel and Anne Dodd  
 Dr. and Mrs. George M. Donahue  
 Mr. and Mrs. George Dubey  
 Mr. and Mrs. Robert E. Dubos  
 Harriet F. Farney, PhD  
 Mr. and Mrs. Rudy J. Favretti  
 Dr. and Mrs. Kenneth L. Feder  
 Ms. Nancy J. Ferlow  
 Mr. and Mrs. Elmer M. Fischer  
 Mr. Thomas F. Flynn III  
 Mr. John C. Folsom  
 Mr. and Mrs. Thomas R. Gauthier  
 Ms. Irene F. Gay  
 Mr. Bruce N. Gerber and Ms. Valarie Botta  
 Mr. and Mrs. Bernard E. Gerling  
 Mr. and Mrs. Donald F. Gladding  
 Mr. and Mrs. Glen B. Glater  
 Mr. and Mrs. Werner G. Glatz  
 Mrs. Bette D. Glickman  
 Mr. and Mrs. Terrill D. Goodman  
 Mr. Edward S. Goodrich and  
 Ms. Elizabeth A. Thayer-Goodrich  
 Dr. and Mrs. Charles D. Goodwin  
 Ms. Shelly L. Gray  
 Mr. and Mrs. Thomas M. Gray  
 Mr. and Mrs. Don Green

Mrs. Hope Grunske  
 Mr. Stephen F. Gudernatch  
 Mr. and Mrs. William J. Guinness  
 Dr. and Mrs. David Grover Haines  
 Mr. and Mrs. Roswell G. Hall III  
 Ms. Victoria L. Hart  
 Mr. and Mrs. Winston W. Hawkins  
 Mrs. Mary-Ellen Hebert  
 Dr. Francis W. Helfrick  
 Dr. and Mrs. Lawrence E. Hightower  
 Dr. Thomas A. Hoagland and  
 Dr. Robin L. Graves-Hoagland  
 Mr. and Mrs. Frederic W. Hopkins  
 Mr. Michael A. Horvath  
 Mrs. Marjorie L. Hoskin  
 Mr. William B. Howard  
 Mr. and Mrs. Judson Hunter  
 Ms. Anne H. Isbister  
 Ms. Melissa R. Jacobs  
 Dr. Jacqueline and Mr. Stephen Jacoby  
 Ms. Kathryn L. James-Stebbins  
 Mr. Conrad P. Janssen  
 Dr. and Mrs. Keith B. Johnson  
 Mr. and Mrs. Eric C. Jones  
 Mr. and Mrs. Harry W. Jones  
 Dr. and Mrs. Donald E. Jordan  
 Mr. and Mrs. Christian Joseph  
 Ms. Monica A. Kangley  
 Mrs. Bettejane Karnes  
 Mr. and Mrs. Charles J. Katan  
 Dr. and Mrs. Lewis Katz  
 Mr. Bill Kaufmann and  
 Ms. Paulette Clark-Kaufmann  
 Mrs. Tamara D. Kearney  
 Ms. Kathleen M. Kelleher  
 Ms. Marion C. Kelliher  
 Mr. and Mrs. Roger A. Kelsey, Jr.  
 Mr. and Mrs. David J. Kennedy  
 Ms. Mary A. Kenney  
 Dr. and Mrs. Timothy J. Killeen  
 Mrs. Josephine A. B. Kind  
 Mr. and Mrs. Peter R. Kisselburgh  
 Ms. Evelyn L. Kittredge  
 Dr. and Mrs. Paul G. Klemens  
 Mr. and Mrs. Dennis G. Knowlton  
 Mr. and Mrs. Neal A. Konstantin  
 Dr. and Mrs. Henry Krisch  
 Mr. and Mrs. Thomas J. Kuenzig  
 Mr. H. Russell Kunz

Mrs. Ruth R. Ladd  
 Mr. and Mrs. George Landis  
 Mrs. Mary B. Langley  
 Mr. and Mrs. Stuart A. Lanz  
 Mr. and Mrs. Gerald Lee  
 Dr. and Mrs. Harold J. Lehmus  
 Dr. and Mrs. Gerald M. Leibowitz  
 Mrs. Diane Lindsay  
 Mr. and Mrs. Robert H. Link  
 Mr. and Mrs. Robert W. Lisiewski  
 Mr. and Mrs. John D. Little, Jr.  
 Mr. and Mrs. Richard E. Longmore  
 Mr. John A. Longobardi  
 Ms. Ferne MacDonald  
 Mr. and Mrs. Peter Maddocks  
 Mr. Richard P. Maidment and  
 Ms. Sandra L. Tosi  
 Mr. and Mrs. Robert E. Malecki  
 Mrs. Shirley N. Malinowski  
 Dr. and Mrs. Conrad L. Mallett  
 Ms. Lois E. Maloney  
 Mr. Frank W. Mantlik  
 Mr. and Mrs. Tom Markland  
 Dr. and Mrs. Richard H. Martindale  
 Mrs. Margaret B. McCarrick  
 Mr. and Mrs. Charles H. McCaughtry  
 Mr. and Mrs. James McCormick  
 Mr. Thomas McGee  
 Ms. Vardina H. McGee  
 Mr. and Mrs. Richard H. McKillip  
 Mrs. Carol E. McMillan  
 Ms. Judith A. Melichar  
 Dr. and Mrs. Douglas W. Melody  
 Mr. and Mrs. Nelson B. Meredith  
 Dr. and Mrs. Gregory A. Miller  
 Ms. Ruth B. Morrill  
 Mr. and Mrs. James R. Morrow  
 Dr. Maureen T. Mulroy  
 Mr. and Mrs. James E. Murphy  
 Ms. Nancy M. Murray  
 Ms. Mary H. Nagler  
 Dr. Letitia and Mr. Mark Naigles  
 Mr. and Mrs. John D. Neumuth  
 Ms. Joanne M. Norris  
 Ms. Priscilla D. Oliver  
 Ms. Mabel W. Owen  
 Mr. and Mrs. Richard R. Pacelli  
 Ms. Pauline A. Palmquist  
 Mr. and Mrs. Robert R. Parker

Mr. Frank X. Paturzo, Jr.  
 Ms. Margaret L. Perry  
 Mr. Andrew M. Szych, Sr. and  
 Ms. Patricia A. Peters  
 Drs. Gerald and Cynthia Peterson  
 Ms. Karin E. Peterson  
 Mrs. Eleanor B. Plank  
 Mr. James F. Poetzingier  
 Mr. and Mrs. Frederick J. Pogmore  
 Jeffrey S. Pondick, PhD  
 Mr. and Mrs. William E. Powers  
 Ms. Marie E. Prue  
 Mr. and Mrs. Ricardo K. Quintero  
 Mr. and Mrs. James Randall  
 Mr. and Mrs. Keith A. Randino  
 Mr. and Mrs. George N. Raney  
 Mr. Joe Recesso  
 Mr. and Mrs. Ralph A. Redman  
 Ms. Madeline R. Regan  
 Mrs. Constance P. Reichardt  
 Mr. and Mrs. Martin B. Reiter  
 Mr. Randolph E. Richardson  
 Mr. and Mrs. Lionel C. Roberge, Jr.  
 Ms. Elizabeth A. Robinson  
 Mr. James S. Romanow and  
 Ms. Robin Lubatkin  
 Dr. and Mrs. James B. Ross  
 Mr. and Mrs. Chauncy N. Rucker  
 Mr. and Mrs. Edgar B. Russ  
 Mr. and Mrs. Clifford G. Safranek  
 Mr. and Mrs. Frank R. Salamon  
 Ms. Helen E. Sanborn  
 Mr. and Mrs. Todd A. Sauer  
 Mrs. Elizabeth C. Savage  
 Mr. and Mrs. Thomas E. Sayers  
 Mr. and Mrs. Jack L. Scaduto  
 Mr. and Mrs. Paul M. Scannell  
 Ms. Paula L. Schiller  
 Mr. and Mrs. Stephen P. Schipani  
 Mr. Robert M. Schoff  
 Mr. and Mrs. Brian G. Schwanda  
 Mr. and Mrs. Jonathan R. Schwartz  
 Ms. Ann K. Sedgwick  
 Mr. and Mrs. Barry C. Setterstrom  
 Mr. and Mrs. James V. Sgro  
 Mr. and Mrs. John W. Shannahan  
 Mr. David R. Shortell  
 Mr. and Mrs. Steve Simoneau  
 Ms. Roberta K. Smith

Mr. and Mrs. Olcott V. Snow, Jr.  
 Dr. and Mrs. Ralph G. Somes  
 Mr. and Mrs. John J. Spaulding  
 Stanadyne Corporation  
 Ms. Lynne D. Steeves  
 Mr. and Mrs. Robert C. Stewart, Jr.  
 Dr. Karl P. Stofko  
 Dr. and Mrs. William C. Stwalley  
 Ms. Sally T. Sumner  
 Dr. Jennie and Mr. Robert Talbot  
 Dr. and Mrs. John A. Tanaka  
 Ms. Sally L. Taylor  
 Mrs. Eva M. Teague  
 Mrs. Mary E. Thatcher  
 Mr. Franciscus Thomas, Jr.  
 Mr. Walter R. Tokarz  
 Mr. and Mrs. George B. Towle  
 Mr. and Mrs. Thomas J. Trella  
 Mr. John Triana  
 Ms. Emily Trigueros  
 Mr. and Mrs. James K. Troeger  
 Ms. Deborah A. Turner  
 Ms. Hazel F. Tuttle  
 Unilever United States Foundation, Inc.  
 Dr. Sjeff A. van den Berg  
 Dr. Frank D. Vasington  
 Ms. Lynn A. Veal  
 Mr. and Mrs. William Vermeulen  
 Mr. and Mrs. Robert W. Vose  
 Mr. Robert L. Walsh  
 Mrs. Elizabeth T. Wardwell  
 Mr. Frederic W. Warner  
 Mrs. Elizabeth T. Wassmundt  
 Mr. Frederick W. Wassmundt  
 Ms. Laura L. Webb  
 Mr. and Mrs. Terry R. Webster  
 Mrs. Virginia Welch  
 Mr. Franklin J. Wells  
 Mr. and Mrs. Donald F. Wetherell  
 Mr. and Mrs. Ralph L. Wetherell, Jr.  
 Mr. and Mrs. Paul R. Wetzel  
 Mr. and Mrs. Charles E. Whelan, Jr.  
 Drs. Martha and William Wilson  
 Mr. Roger J. Winkel  
 Mr. Walter Zincavage and  
 Ms. Elaine M. Corey-Zincavage



Plume Mica Photo by Drew Hartly